

County Connection

FALL 2019

Nelson County Health Services Foundation

P.O. Box 506
McVille, ND 58254
(701) 322-4328

Anna Walter,
Executive Director

Foundation Board Members

David Aaser
President

Bob Engen
Vice President

Gayle Klefstad
Secretary

Renae Arneson

Margie Brekken

Evonne Frederick

Deb Narum

Lori Nichols

Olen Ophaug



Nelson
County
Health
System

Clinic - Hospital - Care Center
Assisted Living



Anna Walter,
Executive Director

Executive Director Report

Happy Holidays! As the holiday season approaches and 2019 is coming to an end, I find that I spend time reflecting on the past year and the changes that have occurred both professionally and personally. I am thankful for the opportunity I was given this Spring to come to the Nelson County Health Services Foundation and reconnect with the Nelson County community. I greatly appreciate each of you that have taken the time to stop by to welcome me and the conversations we have had. I began this new journey at the end of May and have enjoyed being able to be a part of some of the fun events hosted by the Foundation such as Picnic in the Park this past Summer, Table Fantasia in October and Winterfest in November! At each of these events, it has been wonderful to see the support from the community as they wouldn't be possible without each of you.

The goal of the Nelson County Health Services Foundation is to continue to enhance services and strengthen the future of our Health System and in turn our community. This past year our Foundation has been able to help NCHS by providing new equipment and help with costs of some much needed projects. Below are the ways we were able to support our local health system in 2019.

- Five Hospital Beds
- Lift Chair at the Hospital
- Two Care Center Beds
- New LED lighting at the Care Center
- Spa Bath Tub at the Hospital
- New Gas Range at the Care Center
- Hospital Remodel Project
- Care Center Boiler Project

We know that everyone has a number of charities to choose to support and we are grateful and honored you continue to choose NCHSF as one of them. Thank you for allowing us to make NCHS the best medical facilities for our patients, their families and the communities we serve.

Wishing each of you and your loved ones a blessed holiday season!

SAVE THE DATE



Giving Hearts Day
Feb. 13 #countme

NCHS Foundation Welcomes New Board Member

Evonne Frederick joined the Nelson County Health Services Foundation Board of Directors this past Fall when she accepted to fill the remaining term previously served by Joyce Dahlen. Evonne and her husband Robert, currently reside in Lakota. Evonne is an avid supporter of Nelson County Health System and is committed to creating awareness of the great care and services that NCHS can provide locally to our communities.



*Welcome,
Evonne!*

12th Annual Table Fantasia a Success!

It was a dreary day, but a lot of fun and fellowship was had at this year's 12th annual Table Fantasia! With 80 guests in attendance, the McVille Lutheran Church was filled with warmth and joy as the guests were taken on a tour of the 10 beautifully decorated tables and participated in games and basket auctions. There was a short program that included a special time of remembrance for long time Table Fantasia committee member, Joyce Dahlen. Thank you to the table hostesses, those who donated prizes or baskets, the committee members, volunteers and board members for their time and dedication to this event. This year's event raised just under \$2,000 that went towards purchasing a Rickshaw Bicycle for the Care Center. A Special thanks goes to Marcella Olson for coordinating and Dee Lillehaugen for the amazing lunch.

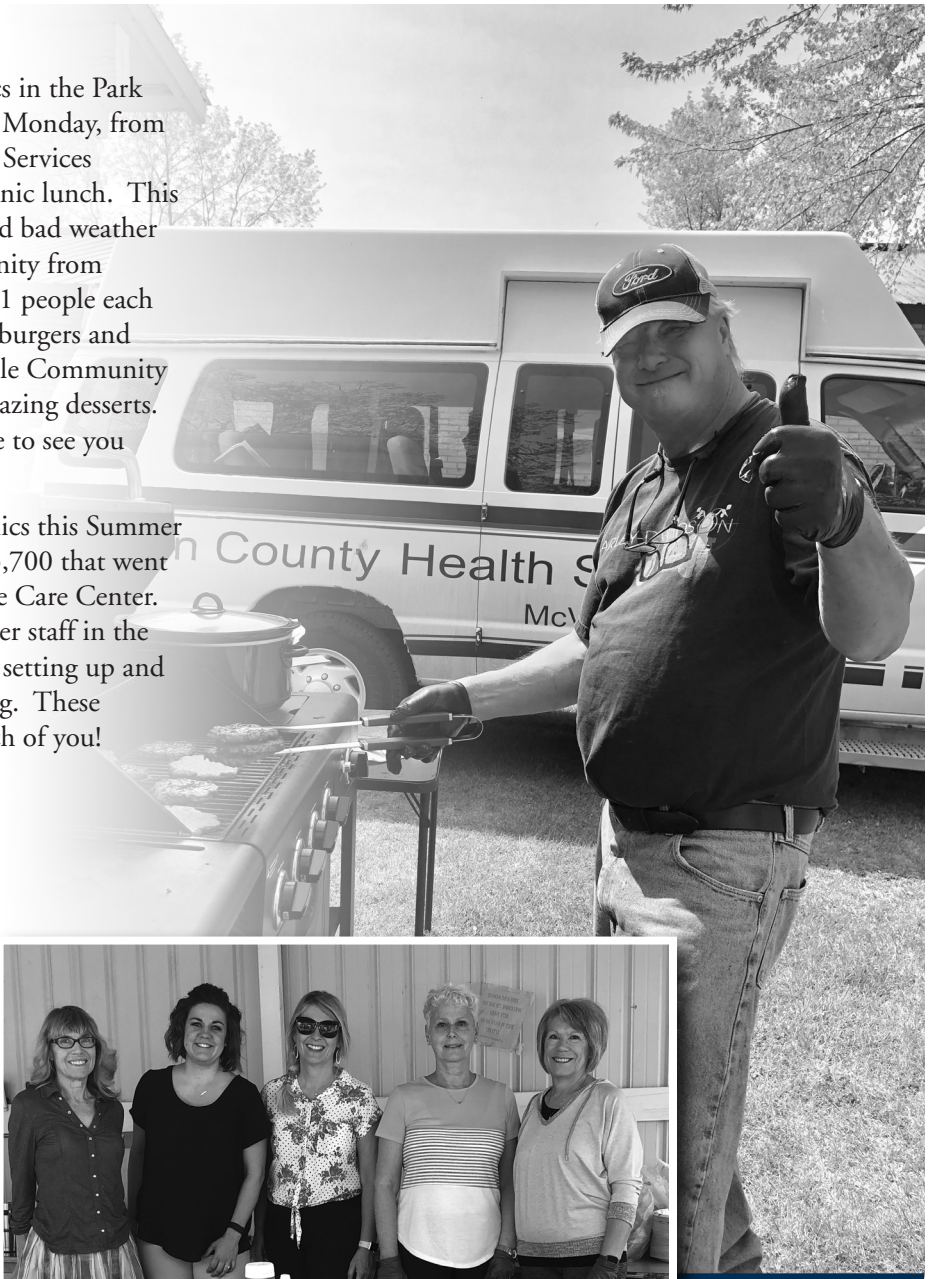
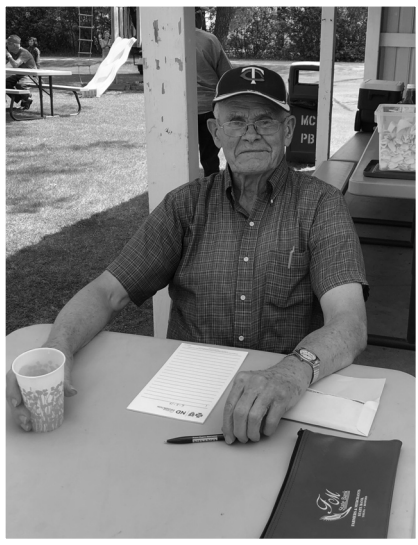


The 12th Annual Table Fantasia raised nearly \$2,000 towards purchasing a Rickshaw Bicycle for NCHS Care Center.

Picnics in the Park

This past June marked our fifth year of Picnics in the Park and it was our most successful year yet! Each Monday, from June thru August, the Nelson County Health Services Foundation board and volunteers served a picnic lunch. This year we served over 1200 people! We only had bad weather for a few picnics, but that didn't stop community from coming out for lunch because we averaged 101 people each picnic! It's hard to beat a five dollar lunch of burgers and brats or taco in a bag. In addition, the McVile Community Library volunteers served coffee and some amazing desserts. If you haven't made it to a picnic yet, we hope to see you there this next June!

Thank you to all of you that came to the picnics this Summer to support the foundation. We raised over \$3,700 that went towards purchasing a Rickshaw Bicycle for the Care Center. A special thank you to Sharon Maerens and her staff in the Dietary department, as well as Brad Huso for setting up and grilling, and O'Neal Johnson for his cashiering. These picnics could not have been done without each of you!



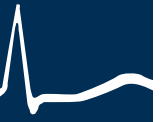
Nancy Sigette Healthcare Scholarship Awarded

Paige Haakenson was named the 2019 recipient of the Nancy Sigette Memorial Healthcare Scholarship.

Paige is from Aneta and a recent 2019 graduate of Dakota Prairie High School. She is started attending South Dakota State University this Fall, majoring in pre-medicine. She then plans to continue her studies to seek a Doctor of Chiropractic degree.

Paige sees the need for quality medical care in our rural communities and hopes to one day come back to help the residents of Nelson County.

The Nelson County Health Services Foundation is honored to assist the Sigette Family in the administration of this scholarship which was established in memory of Nancy to assist students pursuing careers in healthcare. Congratulations Paige!



Dori Baseler, FNP, new provider at NCHS!

Nelson County Health System announces Dori Baesler, FNP, as a new provider at the NCHS Clinic in McVile. Dori graduated from the University of Cincinnati in 2019 with her Masters of Science in Nursing, Family Nurse Practitioner. In her free time, Dori enjoys spending time with her husband and children at home on their farm, playing and watching sports and staying active.

Dori began seeing patients this August at the McVile Clinic. She cares for patients of all ages from providing well-child visits for infants and young children to treating adults with chronic illnesses. "I want to take the time to make the most of every visit. I want to make you, the patient, feel comfortable with the care I provide you, and make sure the decisions we make together is what is best to meet your health needs." states Dori.

NCHS is excited to welcome Dori to our staff and look forward to working with her for years to come.



Michele Stein
NCHS Daycare Director

NCHS Daycare Marks One Year Being Open

This past August marked the one year anniversary of the Nelson County Health Services Daycare being open! The NCHS daycare is licensed by the state of North Dakota and participates in the Bright and Early Program, which is the North Dakota Quality Rating and Improvement System that helps identify high-quality child care and early education programs that prepare children for school and life. This is a four step program and the daycare has completed Step 1 and is actively working on Step 2.

Since opening, the daycare has cared for up to 12 children and employs one full-time and two part-time staff members. NCHS Daycare Director Michele Stein states, "We are grateful for the support of the Hospital Board, the Foundation Board and the community. This past Spring we were awarded a grant for playground equipment through Blue Cross and Blue Shield that the children enjoy playing on."

The NCHS Daycare is an additional benefit for all Nelson County Health System employees. If you would like to know more about open positions at NCHS, please call Janet a 701-322-2222.



NCHS Hospital Staff Participate in Emergency Room Simulation Training

Simulation in Motion (SIM-ND) is a statewide, mobile education system using high fidelity human patient simulators to train hospital personnel in emergency care situations. The simulation learning occurs in a 44 foot custom-built learning lab. Each lab includes a simulated emergency room (ER) with slide out extensions and a simulated ambulance space in the rear. The computerized mannequins that are used talk, breathe, have heartbeats and are able to react to medications and other actions of the learners. The NCHS Hospital Staff encountered two different scenarios in their training: STEMI (a very serious type of heart attack) and stroke. Tosha Ebertz, NCHS Hospital Director of Nursing states, "It was a very educational experience for everyone involved. We appreciate the opportunity to receive these trainings because they help to keep our emergency care skills up-to-date."

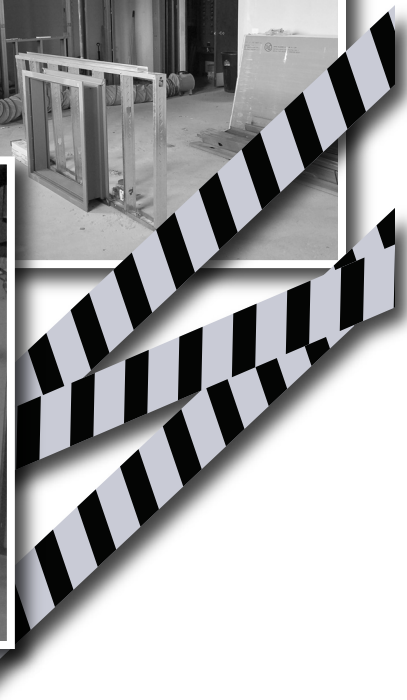


NCHS Construction Update

The demolition and remodeling has begun at the hospital for relocating our Lab and X-ray departments to the main floor, new handicap accessible bathrooms and handicap accessible entrance doors for the hospital, clinic and care center! The handicap accessible entrance doors to the clinic, hospital and care center should be completed this Fall. The rest of the remodel, which is bring the Radiology and Laboratory departments to the main level, is anticipated to be complete this February.

In addition to the newly remodeled space at the hospital, thanks to a grant we received from the Helmsley Charitable Trust, we will also have two new pieces of x-ray equipment, one mobile and one fixed machine.

This large remodel project was made possible by a generous donation from an anonymous donor to the Foundation and through state funding. An open house will be planned when the remodel is complete.



NCHS Care Center News



Thank you John, Raini, Jason, Rhonda, Jackie and Nadine for going above and beyond caring for our residents. Your efforts have been not only recognized by the residents, but also your fellow coworkers.

Congratulations!



MAY
John Kelly



JUNE
Raini Wallace



JULY
Jason Colvin



AUGUST
Rhonda Avdem



SEPTEMBER
Jackie Dares



OCTOBER
Nadine Eslinger



JURASSIC JUNGLE



Our Care Center may be located in a small town, but our staff's creativity is gigantic! For the past 22 years they've been creating a theater within the Nelson County Health System Care Center each Halloween. Every year they create a different theme and this year's theme was called the "Jurassic Jungle." Dinosaurs were all over the facility with both NCHS Care Center staff and volunteers from the SADD group at Dakota Prairie dressed in themed costumes. Families from the community and residents attended and enjoyed the Jurassic Jungle maze. The maze ended with everyone receiving dinosaur themed treats. Thank you to all our devoted staff, the SADD group, Darlene and John Kelly and Deb Hensrud for all your hard work!



Many ways of giving to the Nelson County Health Services Foundation

Memorials:

Wonderful way of supporting our mission and remembering a loved one.

Gift of Wheat:

A unique way of giving by selling grain at the elevator in the Foundation's name. This a good tax-saving method.

Life Insurance:

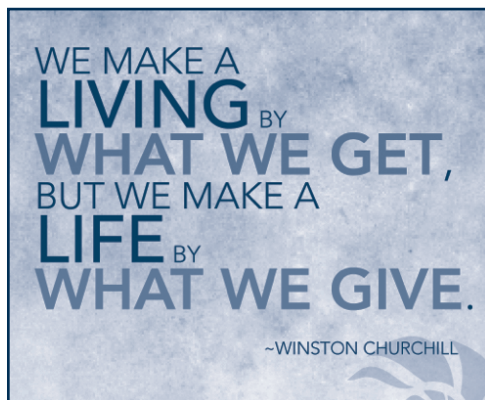
Another way of giving is to designate all or a percentage of your life insurance policy proceeds or transfer ownership of a paid-up life insurance policy to the Nelson County Health Services Foundation.

Wills and Estate Planning:

Everyone needs a will! We are grateful for those that have remembered the Foundation and Hospital in their wills and trusts.

Endowment Fund:

The Nelson County Health Services Foundation Endowment Fund was established in 2014 to provide a long-term financial resource for the Foundation. This is a permanent fund managed by the North Dakota Community Foundation—all dollars raised stay in the fund forever and increase the amount of interest earnings that are available as grants every year.



If you would like to learn about ways you can help support NCHS with a project or equipment, please contact Anna at 701-322-2225.

Nelson County Health System

Steve Forde, NCHS CEO/CFO

NCHS Board Members

Judy Twete, President
Ivan Berg, Vice President
Mary Gleason Secretary/Treasurer
Brandon Jensen
Dee Lillehaugen
Brandon Lundeby
Ranae Oxton
Heather Stein

NCHS Care Center

(701) 322-4314

NCHS Clinic

Main Street,
McVile, ND 58254
(701) 322-4347

Office Hours:

Monday-Friday, 8 a.m. – 5 p.m.

NCHS Hospital

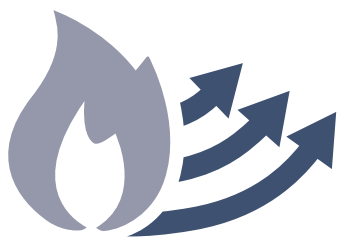
(701) 322-4328

Medical Providers

Erling Martinson, MD
Darlene Kelly, ARNP
Christina N. Brooks, PA-C
Cori R. Garrett Baesler, FNP-C

Altru Health System's Home Care

(701) 322-4328



Care Center Gets a New Heating System

A completely new heating system is being installed at the Care Center building. The NCHS Care Center received partial funding for this project from a North Dakota Department of Commerce grant. A substantial part of the remaining costs of the project were funded by the NCHS Foundation through a generous anonymous donor. New electric boilers, propane backup boilers, new piping, and a new water heater made up the project. NCHS is very grateful for the generous funding from the State and the anonymous donor through the NCHS Foundation, which will enable the Care Center to have reliable heating for years to come.



Nelson County Health Services Foundation

Nelson County Health System
P.O. Box 506
McVile, ND 58254

NON-PROFIT
ORGANIZATION
U.S. Postage
PAID
McVile, ND
Permit No. 3

ECRWSS
POSTAL CUSTOMER



www.nelsoncountyhealthsystem.org

NCHSF 28th Annual Tree of Remembrance

Nelson County Health Services Foundation wishes you a wonderful Holiday Season. It is time for honoring and remembering our loved ones by joining in the Tree of Remembrance. You can give an Honorarium or Memorial by purchasing one of the following symbols. They will be displayed on the walls of the Hospital and the Care Center.

To remember someone in this special way, complete the coupon below and mail it to NCHS Foundation P.O. Box 506, McVile, ND 58254 or you can drop it off at the Foundation office or the Business office in the hospital.

Check your selection

- \$150 and above – Star
- \$100 – Dove
- \$50 – Bell
- \$25 – Snowflake
- \$10 – Candle

In Honor of _____

In Memory of _____

From _____